

An abstract painting with a dense, textured surface. It features a wide array of colors including reds, pinks, purples, blues, yellows, and greens, all blended and layered together. There are some darker, more defined shapes that could be interpreted as stylized figures or animals, such as a white rabbit-like figure in the lower left and a dark, bird-like shape in the upper left. The overall effect is one of vibrant, chaotic energy.

Maitri

Art explaining the meaning of meanings

By

Dr. Gouri Kumra

&

Ms. Mahima Khanna

Maitri is a magnificent mirage of multiplying moments and muses.

She is the meaning of meanings.

She is the moving water which carves its essence and presence.

Harmony with Festivity,

Knowledge with Zest is Maitri

About the Author

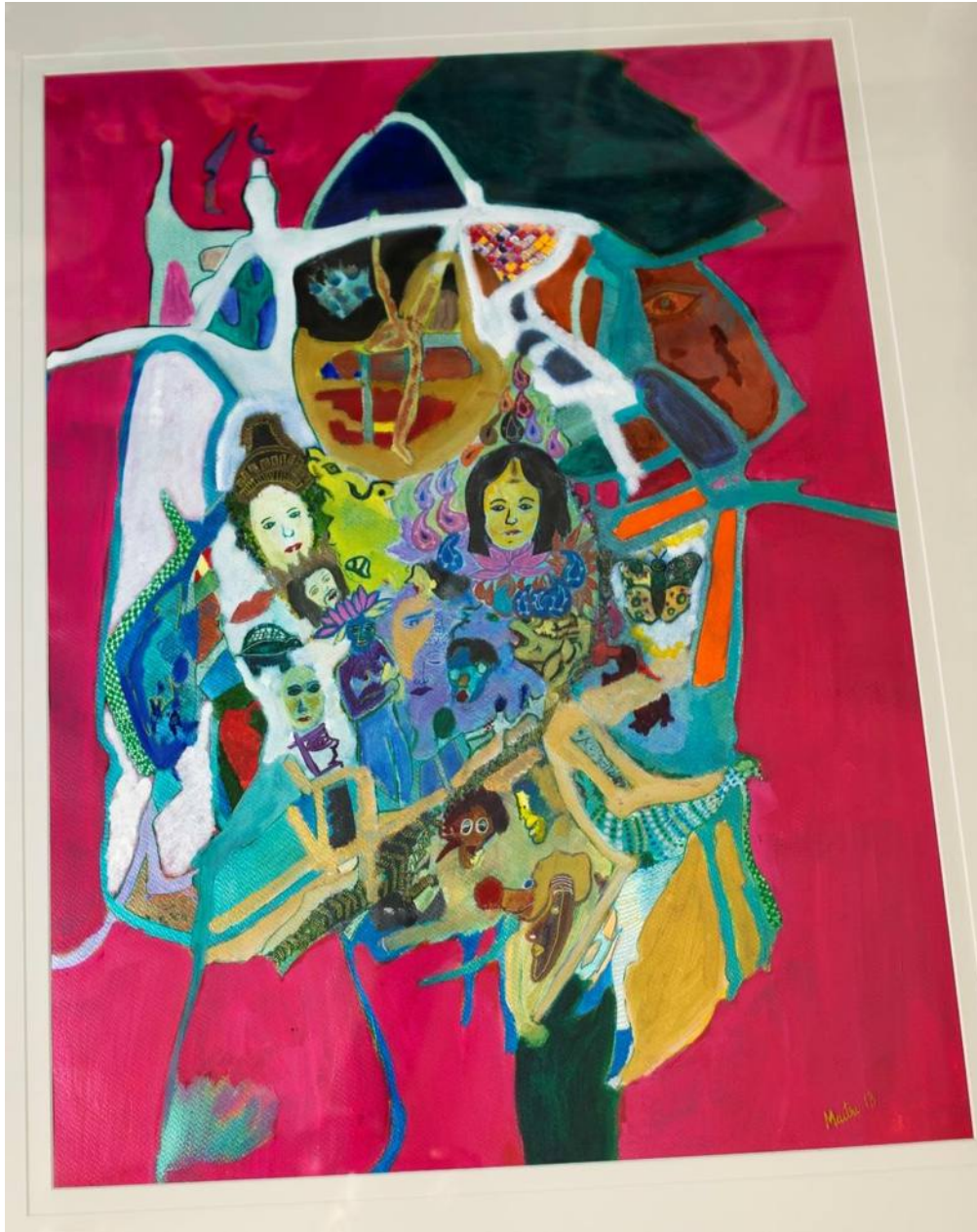
Dr. Gouri Kumra, a renowned Gynaecologist from Kolkata and her daughter Ms. Mahima Khanna, an eminent Economist; have lived 25 years of Knowledge with Zest. They epitomize Maitri, the moving water which carves its own identity while merging with the society.

Colourful by nature, they always added humor to their mundane lives. As a child Gouri spent evenings colouring and sketching every piece of paper she could find. Mahima spent her evenings drawing in Gouri's clinics. Although their professions equipped them with pen and knife, they were always attracted to the brush.

Working as a gynaecologist, enabled Gouri to deal with the gamut of womanhood. She acquired the art of seeing the unseen emotions and interpreting the lines on her patients faces. In 2012, she picked the brush to paper these lines and emotions under the tutelage of Mr. R. Prasad. In April 2013, she learned the tricks of soul painting from Mr. T.H. Yang, a Chinese national and student of Shri. Abindranath Tagore and Shri. Girish C. Ghosh. She also passed on the tricks to her daughter Mahima. Their painting style resembles Van Gogh's bold use of vibrant colours coupled with abstract themes.

They are indebted for the guidance, support from their loving family: Ruma, Swarn, Nina, Anil, Monita, Karishma, Rasika, Aashim. They are deeply grateful to all their friends and well-wishers, especially Mr. Abhishek Sehgal, Dr. Yang, Dr Anindo Kar, Ms. Yashodhra Kundra Ms. Gloria Joseph, Mr Jameel Ahmed, Mr. Amir and Mr. Afsal for helping them realize Maitri.

Clown Mantra



32 in x 40 in

Clown Mantra wears the pink smile of happiness which covers the greens of his anxiety, the yellow of his pain and white of his purity. His nose depicts a deer in the topsy turvy roller coaster called life which starts with

Stage Yo



36 in x 29 in

Youth is the beginning of the cycle. Colourful, manipulative, vibrant, vivacious, opportunistic and whose perspective sees gain and positivity in every new path in life.

Stage Yo is studded with the mystical but sooner or later it leads to

Stage O



36 in x 29 in

Seasons come and go, but the wrinkles of old age adorn the face through thick and thin. Solitude strikes the darkness accompanying the wooing body as it merges with the mother earth. She leaves behind all jewels and bubbles of worldly existence....

Human Head



18 in x 23 in

The mystical human head is colourful, technical, target oriented, stressed, depressed, dressed, pompous, meditative and miserly all at the same time. The head is balanced and unbalanced, it thinks differently every time we coax it to. It is emotional and inclined. Even though the longevity of life is prolonged, its quality is compromised. It runs on the command of chemicals, but the product of every action is different in its own way.

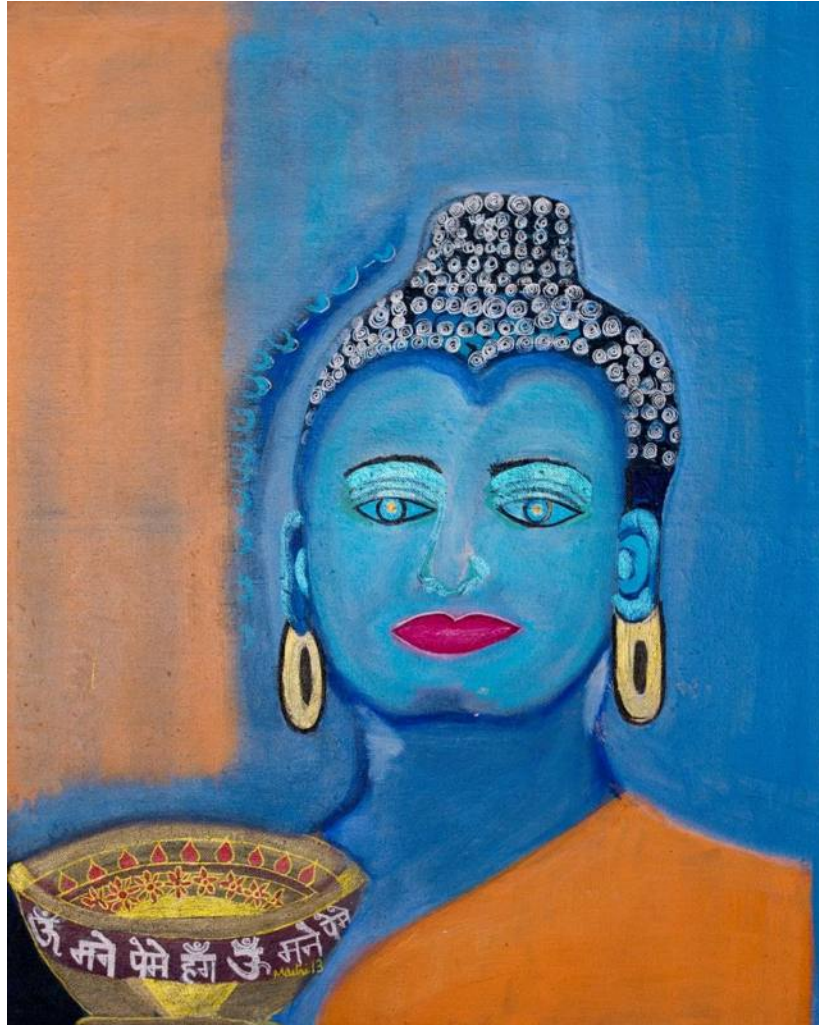
Bee Head



18 in x 22 in

The Bee head is colourful, focused, grips the target in harmony with the environment, yet it is short lived. Even though it has a momentary existence, it hums the same song of joy till the end.

Buddha Head



18 in x 22 in

The Buddha head is balanced, harmonious and in sync with the environment and universe, carrying no baggage, only love and compassion. It connects peace to itself so intimately, that just a look at it can calm the storms of the oceans. The needs are fulfilled in the bowl. The Buddha head shows the same calmness in times of calamity as well as in bliss.

These heads developed cultural beliefs....

Human Culture



27 in x 37 in

The Human head gives rise to the Human culture - red and interspersed with yellow. The new entrant is in red while the seasoned tycoon is in yellow. This furor continues till the new entrant challenges the superior and grows to be an accomplished and beautiful player, maybe even better than the former. The Human world is sometimes self-consuming, deceptive and destructive, but sometimes, it is successful and fulfilling too.

Standing out in the Fragmented World



37 in x 22 in

Identify yourself and steer away from the paws of this fragmented world. The challenges of human life are like the paws of an eagle. One needs to tower over them with creative insights and foresights to create our identity.

Jungle Culture



26 in x 36 in

Bee head developed Jungle Culture. Animals have faith in darkness. They patiently wait for the dark to unveil opportunity. They thrive happily in the mystery of the darkness, till light percolates patiently. The Jungle culture provides a place to everyone. Everyone belongs here, in peace.

Jungle Anger



23in x 18 in

Creation and Destruction happen simultaneously in presence of fierce and lethal anger.

Zuman:



22 in x 21 in

Over time the simple unassuming head of a child transitions into an animal head taking numerous forms – hippopotamus, deer, giraffe and elephant. When ego takes control the tiger head even fails to recognize the descending angel.

Intellectual Culture



36 in x 34 in

Intellectual culture is conceived by the Buddha head. It depicts the simultaneous existence of birth and death. It shows how creation and destruction exist together in unison, and how every little thing we do affects the universe, and bends the future altogether. Our life is in our hands.

Determination



23 in x 18 in

When mankind absorbs positive energy from the galaxy, he becomes determined. With this determination he continues to march forward through flaming roads.

The Middle Path



28 in x 18 in

Monks travel the Middle Path with compassion and tranquility. With their perfect balance of IQ (Intellectual) and EQ (Emotional) they have the strength to transform a buffalo into a swan.

Duality



25 in x12 in

Human form is in total chaos, over riding and destroying each other. The journey of subconscious and conscious is unplanned and usually on separate tracks. The duality of human kind will seize when we become streamlined like the lotus

Freedom with its Lock and Key



31 in x 34 in

At birth Ying and Yang culture develops. Opposites attract and form a complete circle. The circle inscribes that there is good, and there is bad. There is goodness in every bad and evil in every good object. The serpent of desire enfolds the opposites with the key on its mouth, which can be reached through determination and self-control. Unlock the lock, and freedom is attained, which makes you fly, leaving behind all grudges, and you are free just like the dragon fly. You soar through the skies, happily.

Shamanism to Sufism



36 in x 23 in

Life begins with shamanism and ends with Sufism. The transition follows the circle of wisdom which points towards creativity depicted by the blue oak tree.

Bubble Sufi



39 in x 31 in

Elevated souls imbibe nature, appreciate the miracle of a flower, they dance like a bubble sweeping many souls towards life.

Sufi: The Dervish Dance



24 in x 19 in

Self-realization and awareness lead to celebration, which culminates in the Dervish dance of enlightenment.

Religious Ruins



37 in x 50 in

If religious beliefs and convictions are strong, the odds are reduced and the Great Wall of China seems small in front of the monastery jeweled with colourful flags, the unreachable can be accomplished. If one's belief in the greater existence is strong enough, human worries and anger can be bent easily.

Ruins are viewed by the ruins themselves and the creatures thriving on the ruins. Ruins are leftovers after something majestic is blown away, and seem to be useless in today's world. They view themselves with tears of resentment in their virtual eyes, and the only ones to sympathize with them are the creatures thriving on them.

Speculation



37 in x 27 in

The quality of a woman is speculation and contemplation in every decision made and to be made. Here, the woman sits in a Zen environment to nurture her thoughts, and speculates.

The Woman Cube

A unique installation of six different facets of womanhood painted on the six sides of a cube.

The Traditional Woman



23 in x 18 in

A traditional woman is trendy from outside with traditional values inside. She is confident, carefree and caring.

Mother Teresa



23 in x 18 in

Mother Teresa treated the women of Kolkata with love and compassion. She imbibed all their negativity while she retained her positive profile. She empowered them.

Manipulative Woman



23 in x 18 in

The manipulative woman yearn for the crown. Her network, ambition and thought process create a furor. She looks sinister with calm exterior.

Creative Woman



23 in x 18 in

The creative woman maintains a balance between the moon, her eyeball and the lotus in her hands. She is well dressed in body and mind.

Jeweled Woman



18 in x 20 in

The jeweled woman uses her experience to acquire multi-vision. She speaks with a bird's eloquence and looks as radiant as the sun. She is truly jeweled.

Real Woman



18 in x 20 in

The real woman is never born; she is groomed by her experiences. She compartmentalizes all responsibilities and tasks. She is systematic, organized and professional.

Moving Waters



36 in x 96 in

She is the meaning of meanings. She is the moving water which carves its essence and presence.